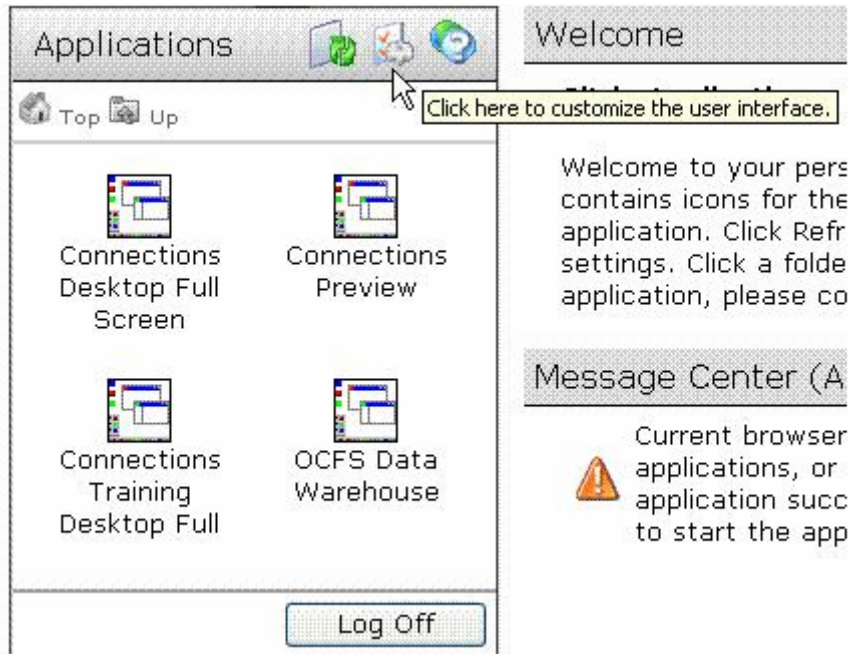
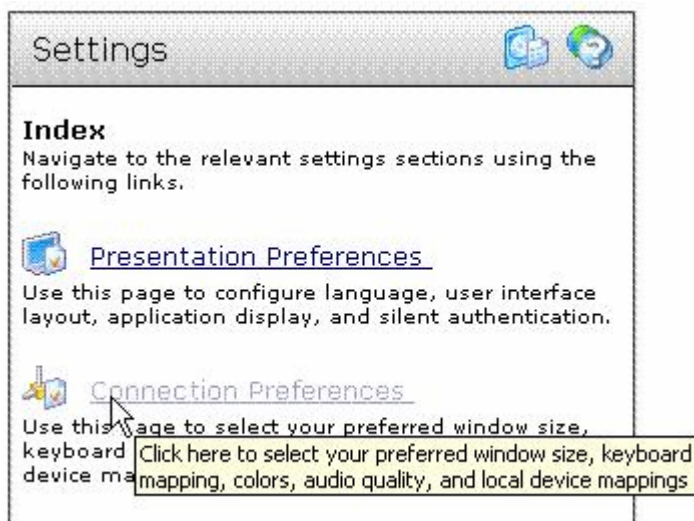


Full Screen Instructions for SSL/VPN or Web Interface Users

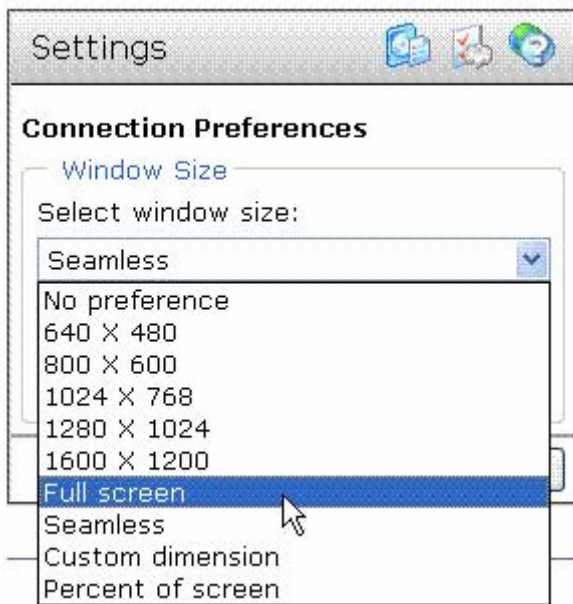
1. After logging on to the Web Interface, click the option to **customize the user interface**.



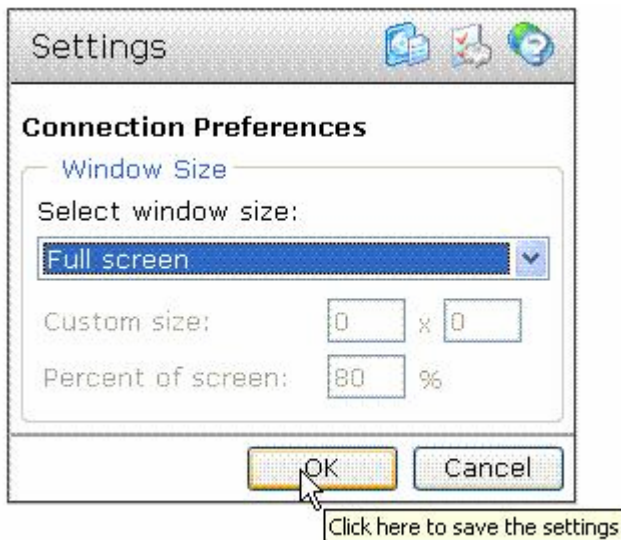
2. Click on the **Connection Preferences** link.



3. Change the setting in the **Select window size** drop down list from the default (which will be Seamless) to **Full screen**.



4. Click the **OK** push button to save the new setting.



5. Click the option to **return to the application list**.

The screenshot shows a settings application window. The title bar contains the word "Settings" on the left and "Welcome" on the right. In the center of the title bar, there are two icons: a blue cube and a green globe. A mouse cursor is hovering over the blue cube icon, and a tooltip box is displayed above it with the text "Click here to return to the application list." The main content area is divided into two columns. The left column has an "Index" section with the text "Navigate to the relevant settings sections using the following links." Below this are two links: "Presentation Preferences" (with a folder icon) and "Connection Preferences" (with a globe icon). The right column has a "Message Center" section with a warning icon and the text "Current browser may require you to save the layout." The "Settings" title in the top right is partially obscured by the tooltip.

Dated: June 25, 2007